

FIRE DEPARTMENT CONNECTION SINGLE INLET



Straight-through, non-clappered design with female outlets
Exposed type for residential "Automatic" sprinkler systems.
2-1/2" (F) outlet x 2-1/2" swivel (F) NST

65-10-202: 2-1/2" SINGLE INLET CONNECTION

2-1/2" (F) outlet x 2-1/2" swivel (F) NST

Finish: rough brass

65-10-202C: 2-1/2" SINGLE INLET CONNECTION COMPLETE

Includes: 2-1/2" plug with chain and 4-7/16" O.D. round wallplate "AUTO SPKR"

Finish: rough brass

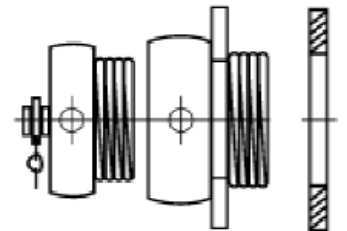
65-10-202CP: 2-1/2" SINGLE INLET CONNECTION (Chrome Plated)

2-1/2" (F) outlet x 2-1/2" swivel (F) NST

65-10-202C-CP: 2-1/2" SINGLE INLET CONNECTION COMPLETE (Chrome Plated)

Includes: 2-1/2" plug with chain and 4-7/16" O.D. round wallplate "AUTO SPKR"

Finish: Chrome Plated Brass



The information contained herein is produced in good faith and is believed to be reliable but is for guidance only. ARGCO and its agents cannot assume liability or responsibility for results obtained in the use of its product by persons whose methods are outside or beyond our control. It is the user's responsibility to determine the suitability of any of the products, methods of use, or preparation prior to use, mentioned in our literature. It is the user's responsibility to observe and adapt such precautions as may be advisable for the protection of personnel and property in the handling and use of any of our products.

**FOR MORE INFORMATION CALL ARGCO AT 1-800-854-1015
OR LOG ONTO WWW.ARGCO.COM**