

## Fire Hose Rack Nipple

### 1 1/2" NPT x NST Brass Rack Nipple

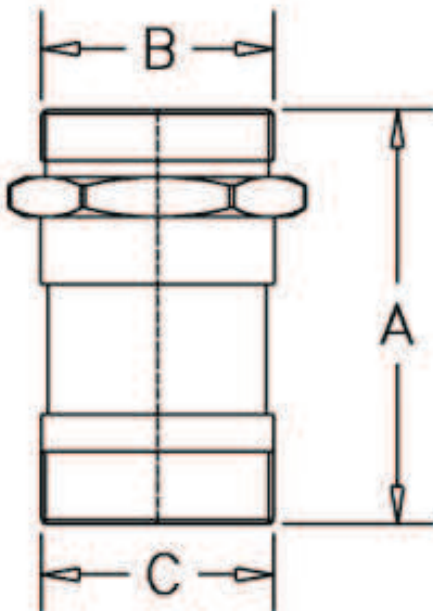


Male to Male Hose rack nipple used with swinging hose rack. Same size both ends. Male NPT x Male NST thread.

**Finish :** Polished Brass

**Optional Finish :** Polished Chrome

### Dimensions:



A= 3.5" (88.68mm)

B= Regional Hose Thread

C= NPT Thread