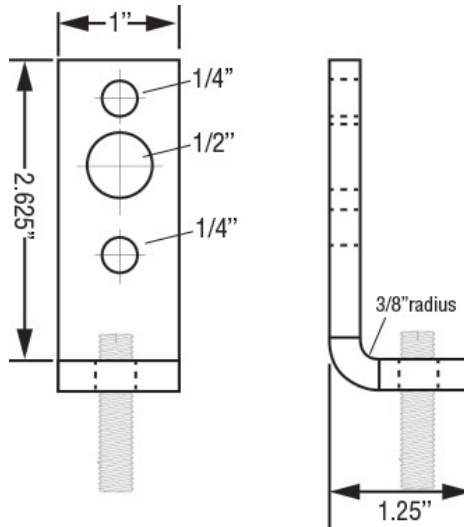


TAPPED ANGLE BRACKET

Steel

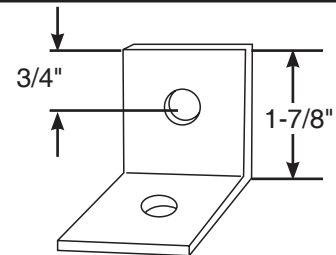


- Surface Finish: Electro-zinc plated
 - Pre-threaded structural attachment fastened to wall or the side of a joist to support hanger rod
 - Conforms with Federal Specification WW-H-171, Manufacturers Standardization Society ANSI/MSS-SP-58; install in accordance with ANSI/MSS-SP-69
- Material: Carbon Steel
Finish: Pre-Galvanized

Item #	Description	ROD SIZE	MAX. LOAD CAPACITY	BOX QTY	ERICO®
2530258A	Tapped Angle Bracket (Pre-Galvanized)	3/8"-16	560#	300	2370037EG

ANGLE BRACKET

Steel



Designed for use with wood, steel or concrete beams to provide a means for supporting hanger rod.

- Size Range: 3/8" & 1/2" rod sizes
 - Surface Finish: Electro-zinc plated, Black
 - Structural attachment fastened to the wall or the side of a joist to support hanger rod
 - Conforms with Federal Specification WW-H-171 (Type 35), Manufacturers Standardization Society ANSI/MSS-SP-58 (Type 34); install in accordance with ANSI/MSS-SP-69
- Finish: Pre-Galvanized

Item #	Description	MAX. LOAD CAPACITY	MAX. LOAD CAPACITY BOLT TO STEEL	BOX QTY	TOLCO®
2530255	Angle Bracket 3/8" x 3/8"	650#	1150#	150	013828
2530256	Angle Bracket 1/2" x 1/2"	650#	1150#	50	013866

System No.		Location		Spec Section		Paragraph	
Submitted By		Date		Approved		Date	

TAPPED ANGLE BRACKET WITH KNURLED NUT

Steel



Function:

Practical and economical bracket used to support piping from wood, concrete or steel beams.

Features:

Unique design allows rod to be easily threaded into bracket.
 Offset design permits unlimited rod adjustment.
 Center mounting hole will accept 3/8" and 1/2" fastener bolts.

Size Range:

3/8" rod, pipe sizes 1/2" thru 4"
 Material: Carbon Steel
 Finish: Pre-Galvanized

NFPA:

Unless the requirements of 17.2.4.3.2 are met, the size of bolt, rod, or lag screw used with a hanger and installed on the side of the beam shall not be less than specified in Table 17.2.4.3.1.

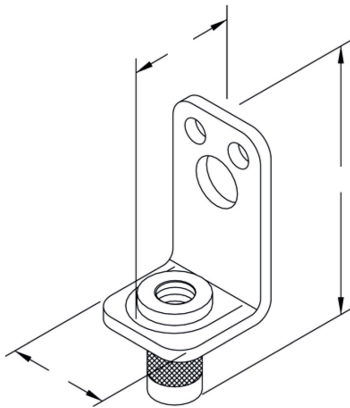


Table 17.2.4.3.1 Minimum Bolt, Rod, or Lag Screw Sizes for Side of Beam Installation					
Pipe Size		Size of Bolt, Rod or Lag Screw		Length of Lag Screw Used with Wood Beams	
in.	mm	in.	mm	in.	mm
Up to and including 2	50	3/8	10	2 1/2	65
2 1/2 to 6 (inclusive)	65 to 150	1/2	13	3	75
8	200	5/8	16	3	75

Item #	ROD SIZE	LOAD CAPACITY	WEIGHT EA.	CROSS REFERENCE TOLCO:
25-30-259	3/8"	300#	.14 LB	TYPE 58

System No.		Location		Spec Section		Paragraph	
Submitted By		Date		Approved		Date	