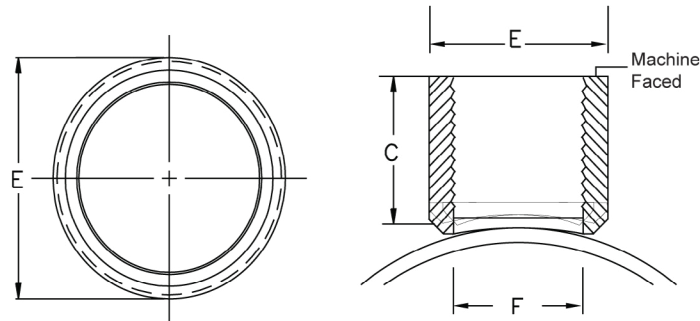


WELDED OUTLETS (THREADED)

SigLet welding outlets are manufactured by Sigma Piping Products from highly weldable steel which conforms to ASTM A 576/A 29. SigLets are designed specifically for use with automatic welding equipment. Threads are cut in accordance with ANSI B1.20.1 national standard for tapered threads.

FOR FIRE PROTECTION & OTHER LOW PRESSURE PIPING SYSTEMS: SigLets offer the user a high strength-low cost, forged threaded outlet specifically designed and manufactured to be installed on proprietary thin wall "FLOW PIPE", Schedule 10 and standard wall pipe.

Description
SigLet



***Made in the U.S.A**

OUTLET SIZE	RUN SIZE	ITEM CODE	Dimension C	Dimension E	Dimension F	HOLE SIZE
1/2"	1 1/4" - 1 1/2"	D-SL011	1.059"	1.063"	0.71"	0.74"
1/2"	2" - 2 1/2"	D-SL012	1.059"	1.063"	0.71"	0.74"
1/2"	2 1/2" - 8"	D-SL013	1.059"	1.063"	0.71"	0.74"
3/4"	1 1/4" - 1 1/2"	D-SL021	1.125"	1.313"	0.917"	0.95"
3/4"	2" - 2 1/2"	D-SL022	1.125"	1.313"	0.917"	0.95"
3/4"	2 1/2" - 8"	D-SL023	1.125"	1.313"	0.917"	0.95"
1"	1 1/4"	D-SL031	1.25"	1.57"	1.156"	1.186"
1"	1 1/2"	D-SL032	1.25"	1.57"	1.156"	1.186"
1"	2" - 2 1/2"	D-SL033	1.25"	1.57"	1.156"	1.186"
1"	3" - 4"	D-SL034	1.25"	1.57"	1.156"	1.186"
1 1/4"	1 1/2"	D-SL042	1.351"	1.90"	1.48"	1.51"
1 1/4"	2" - 2 1/2"	D-SL044	1.359"	1.90"	1.48"	1.51"
1 1/4"	3" - 4"	D-SL045	1.362"	1.90"	1.48"	1.51"
1 1/2"	2"	D-SL052	1.426"	2.105"	1.635"	1.66"
1 1/2"	2 1/2"	D-SL053	1.511"	2.105"	1.635"	1.66"
1 1/2"	3"	D-SL054	1.573"	2.105"	1.635"	1.66"
1 1/2"	4"	D-SL055	1.619"	2.105"	1.635"	1.66"
1 1/2"	6" - 8"	D-SL056	1.619"	2.105"	1.635"	1.66"
2"	2 1/2"	D-SL062	1.283"	2.62"	2.113"	2.143"
2"	3"	D-SL063	1.408"	2.62"	2.113"	2.143"
2"	4"	D-SL064	1.513"	2.62"	2.113"	2.143"
2"	6"	D-SL066	1.615"	2.62"	2.113"	2.143"
2"	8"	D-SL067	1.662"	2.62"	2.113"	2.143"

**FOR MORE INFORMATION CALL ARGCO AT 800-854-1015
OR LOG ONTO ARGCO.COM**