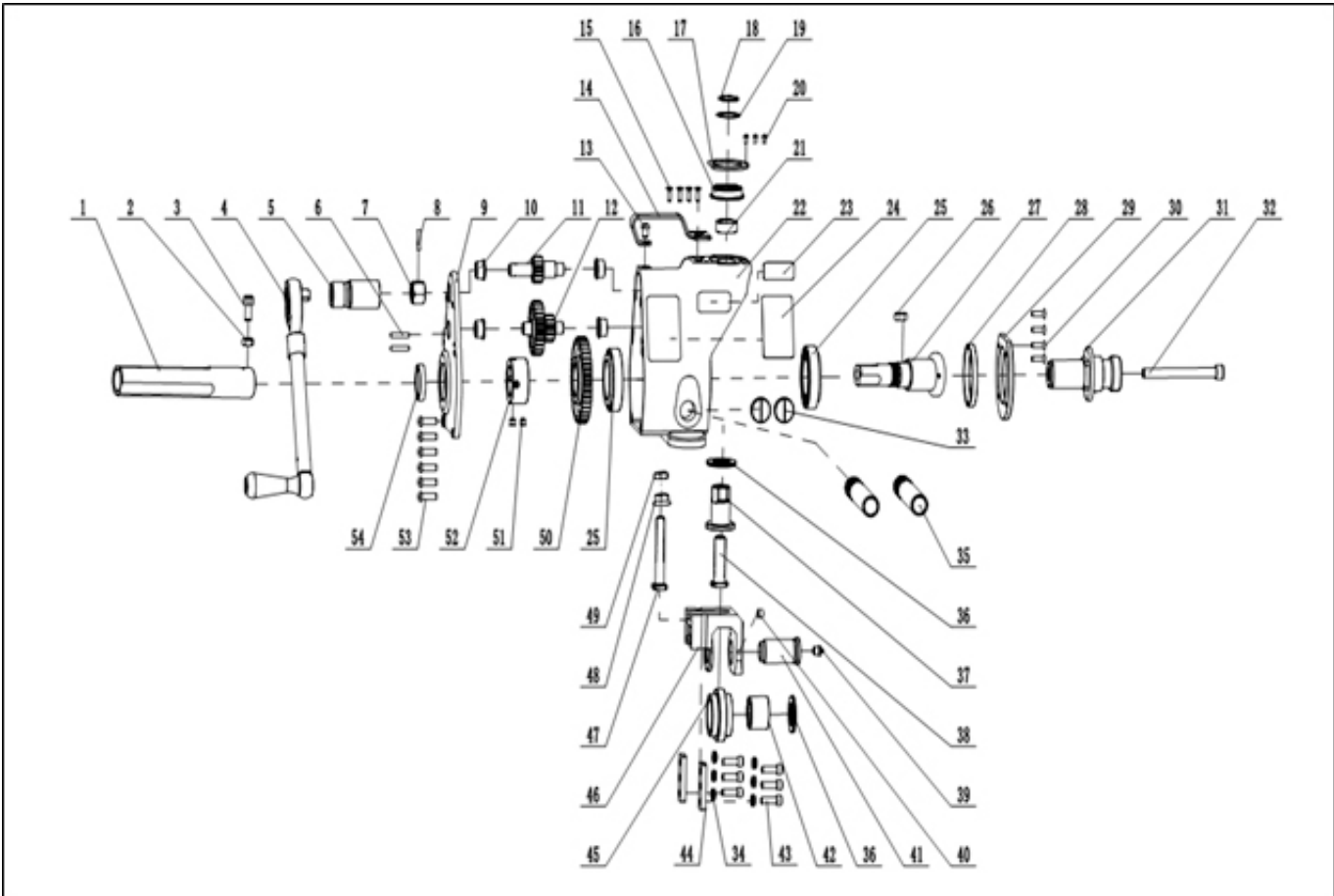


PIPE ROLL GROOVING EQUIPMENT



ARGCO RGM-840 HEAVY DUTY 1"-12" COMBO ROLL GROOVER



Ref.	Item	Description	#	Ref.	Item	Description	#	Ref.	Item	Description	#
1	11015	drive bar adapter	1	21	11017	pointer sleeve	1	40	15018	set screw M8x12	1
2	15021	hex nut M10	1	22	10001	main housing assembly	1	41	11012	groove shaft	1
3	15045	hex screw M10x20	1	23	17007	nameplate	2	42	15003	roller bearing	3
4	15030	ratchet	1	24	17004	groove size plate	1	43	15005	hex screw M8x25	6
5	15029	ratchet socket 5/8"	1	25	15001	roller bearing	2	44	13001	slide key	2
6	15026	dowel pin 6x30	2	26	15024	flat key 12x20	1	45	12005	groove roller 8"	1
7	11005	input nut	1	27	11006	main drive shaft	1	45	12016	groove roller 1" ~ 6"	2
8	15025	shearing pin 5x26	1	28	15012	grease seal	1	46	18001	slide block	1
9	10002	rear cover housing	1	29	13002	cover plate	1	47	11003	stop nut	1
10	11004	copper bearing	4	30	15016	hex screw M6x20	4	48	15014	flange nut M14	1
11	12002	input pinion	1	31	11008	drive shaft 8"	1	49	15013	flange nut M14	1
12	12003	transfer gear	1	31	11009	drive shaft 2" ~ 6"	1	50	12004	large drive gear	1
13	15009	hex screw M8x12	1	31	11010	drive shaft 1-1/4" ~ 1-1/2"	1	51	15049	set screw M8x10	2
14	14002	handle	1	31	11011	drive shaft 1"	1	52	11007	drive shaft locknut	1
15	15015	hex screw M5x16	4	32	15006	drive shaft bolt M10x120	1	53	15046	hex screw M8x25	6
16	12001	index dial	1	32	15004	drive shaft bolt M12x120	1	54	15011	grease seal	1
17	14003	cover ring	1	33	15028	thread plug	2				
18	15019	retainer collar	1	35	11016	support arms	2				
19	14001	pointer	1	36	15002	roller bearing	4				
20	15008	hex screw M4x8	3	37	11002	feed nut	1				
				38	11001	feed screw	1				
				39	15027	grease nuzzle M10x1	2				