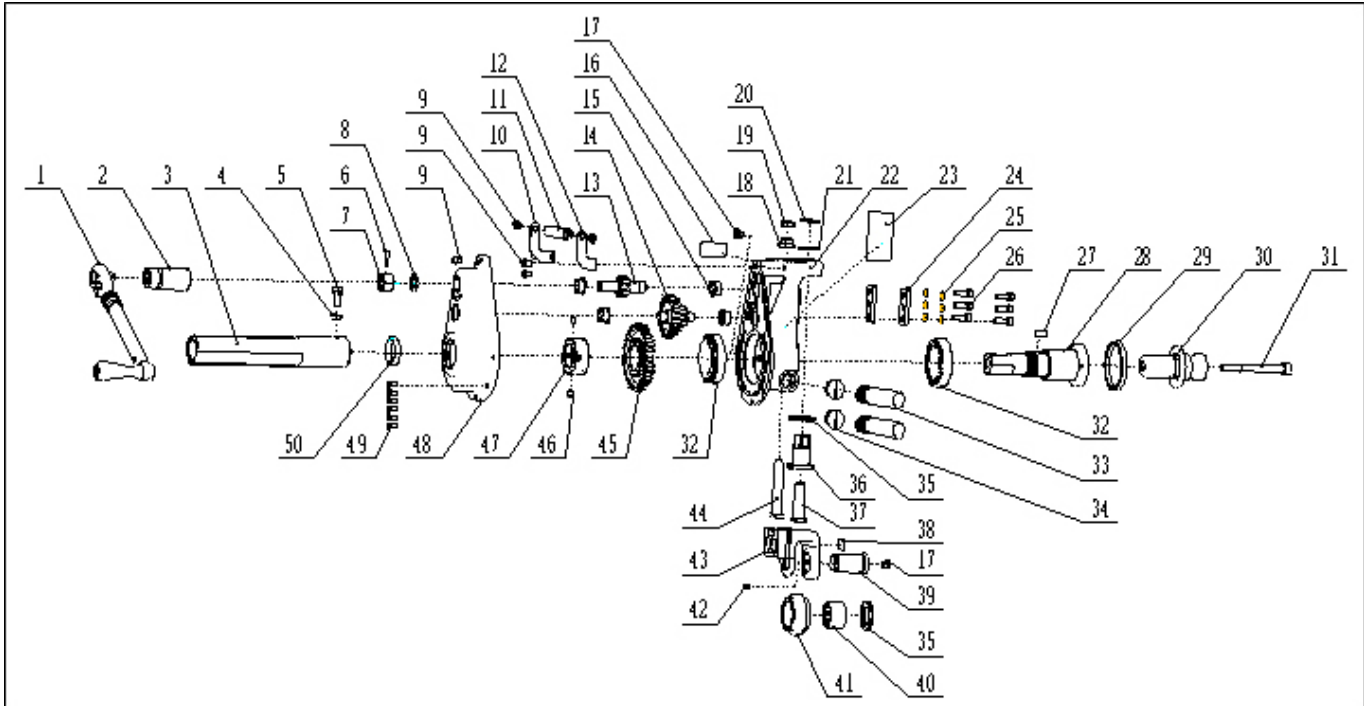


# PIPE ROLL GROOVING EQUIPMENT

## ARGCO RGM-440 LIGHTWEIGHT 1"-12" COMBO ROLL GROOVER



Ref.	Item	Description	#	Ref.	Item	Description	#	Ref.	Item	Description	#
1	15030	ratchet	1	21	14001	friction plate	1	40	15003	roller bearing	1
2	15029	ratchet socket 5/8"	1	22	18008	main housing assembly	1	41	12016	groove roller 1" ~ 6"	1
3	11015	drive bar adaptor	1	23	17004	groove size description	1	42	15018	set screw M8x12	1
4	15021	hex nut M10	1	24	13001	slide key	2	43	18001	slide block	1
5	15045	nex screw M10x20	1	25	15074	spring washes	6	44	11003	stop nut	1
6	15025	dowel pin 5*26	1	26	15046	nex screw M8x25	6	45	12004	large drive gear	1
7	11005	input nut	1	27	15024	flat key 12x20	1	46	15049	set screw M8x10	2
8	15120	flat washes 16	1	28	11006	main drive shaft	1	47	11007	drive shaft locknut	1
9	15121	hex screw M8x16	5	29	15012	grease seal	1	48	20001	rear cover housing	1
10	14007	handle plate left	1	30	11011	drive shaft 1"	1	49	15119	nex screw M6x16	6
11	11072	handle	1	30	11071	drive shaft 1/4" ~ 6" drive	1	50	15011	grease seal	1
12	14008	handle plate right	1	31	15006	drive shaft bolt M10x120	1	/	97002	tools bag	1
13	12002	input pinion	1	31	15004	drive shaft bolt M12x120	1	/	98034	plastic tool case	1
14	12003	transfer gear	1	32	15001	bearing	2	/	96006	user manual	1
15	11004	copper bearing	4	33	11016	support arms	2				
16	17007	name plate	2	34	15028	thread plug 24	2				
17	15027	grease nuzzle M10x1	2	35	15002	roller bearing	1				
18	15014	S.S. flange nut M14	1	36	11002	feed nut	1				
19	15013	S.S. hex nut M14	1	37	11001	stop nut	1				
20	15019	retainer collar	1	38	17006	warning sign	1				
				39	11012	groove shaft	1				