



STRUT CLAMPS & ACCESSORIES



Rigid Pipe Clamp



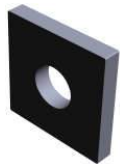
Copper Tube Clamp



Cushion Clamp



Strut Washer
No Turn



Strut Washer
No Turn



Splice Plate
Two Hole



Splice Plate
Three Hole



Splice Plate
Four Hole



Tee Plate
Four Hole



Half Tee Plated
Three Hole



Half Tee Plated
Four Hole



90° Angle
Two Hole



90° Angle
Three Hole



90° Angle
Four Hole



90° Angle
Seven Hole



Open 45° Angle
Two Hole



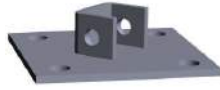
Closed 45° Angle
Two Hole



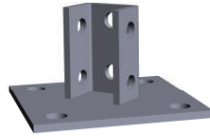
Strut End Caps



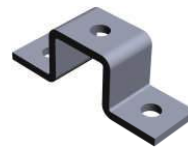
Post Base
Eight Hole



Post Base
Seven Hole



Post Base
Ten Hole



Channel Support
Three Hole



Corner Connector
Eight Hole



Corner Connector
Ten Hole



Triple Wing Connector
Eight Hole



Triple Wing Connector
Nine Hole



Double Gusset Connector
Eight Hole



Channel to Beam
Strut Clamp



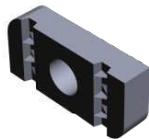
Channel to Beam
Strut Clamp



Strut
Rubber Lining



Strut Squeeze Nut
with Plastic Holder



Strut Nut
without Spring



Strut Nut
with Long Spring



Strut Nut
with Short Spring



Strut Nut
with Top Spring



Strut Vibration
Dampening Mount